

Archaeology of Greece CLAS 1311/ ARCH 1112

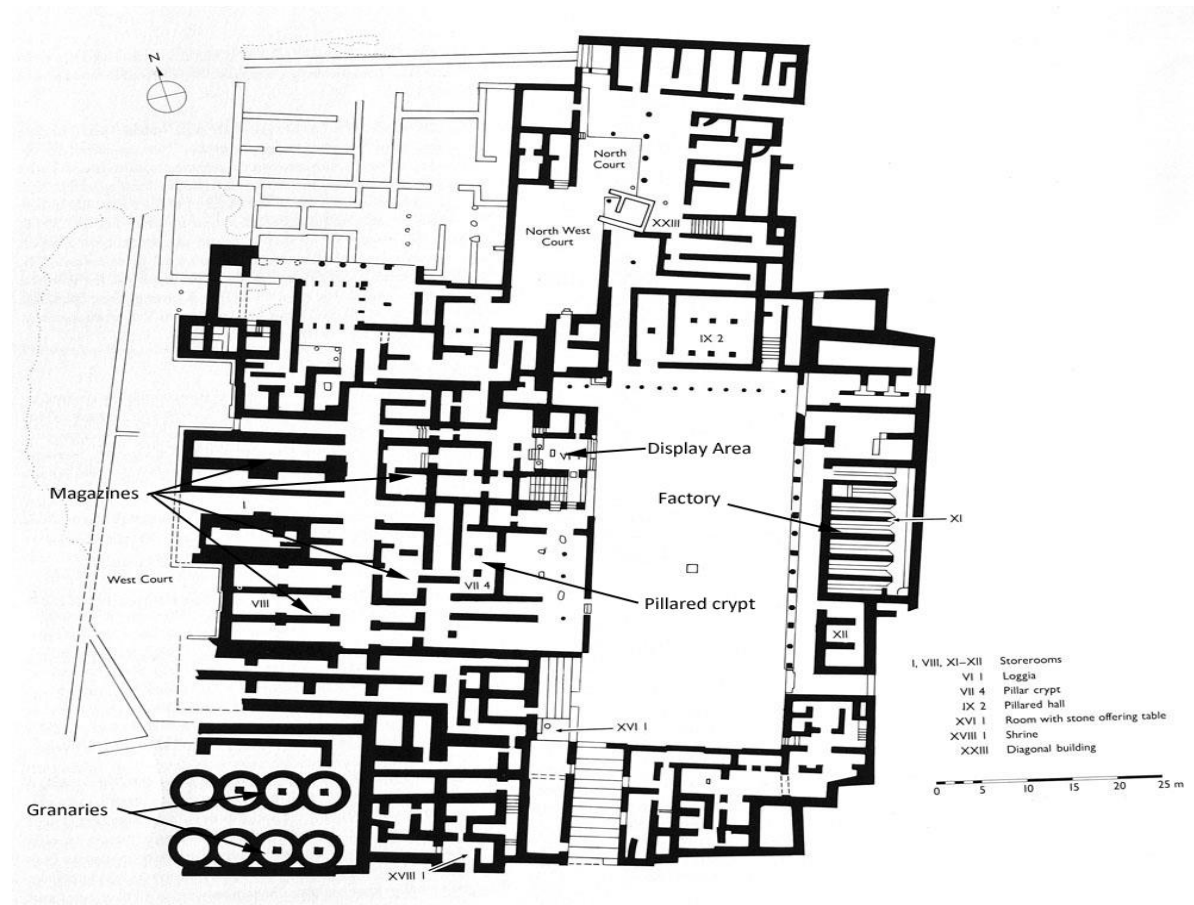
Professor: Nicholas Stufano

email: nicholas.stufano@shu.edu

Office: 234 Fahy Hall

Office Hours: Mon. and Wed. 10:00-11:00 and by appointment

Text: *Greek Art and Archaeology* by John Griffiths Pedley (5<sup>th</sup> edition)



The Late Bronze Age palace at Malia, Crete

This course is an introduction to the prehistory, history, and culture of ancient Greece in light of archaeological discoveries. This will serve students as an introduction to basic archaeological terminology and principles. It is illustrated with slide shows and of course a walk through some of the major sites in Crete and Mainland Greece.

**Grades** will be based on class participation here and, for those travelling, in Greece, that it: being in class, being able, not only, to understand what is being discussed, but also being able to participate in the discussion, attendance here and in Greece, a mid-term, an on-site oral presentation, and a final exam. Three absences are allowed, more will affect your grade by 2% each.

The oral presentation will be a short presentation designed to introduce your fellow students to a particular archaeological site or building in Greece (e.g. the Grave Circles at Mycenae or the temple of Zeus at Olympia) It will be about 10 minutes.

The final exam will be based on all ten chapters of the text book and will require both identification and essay questions.

The break down for grading will be as follows:

Participation and Preparedness	20%
Midterm Exam	30%
Oral Presentation	20%
Final Exam	30%

The class will be conducted according to the guidelines for academic integrity as they are outlined in the Seton Hall catalogue.

Please refrain from using phones devices as self-distractions during class.